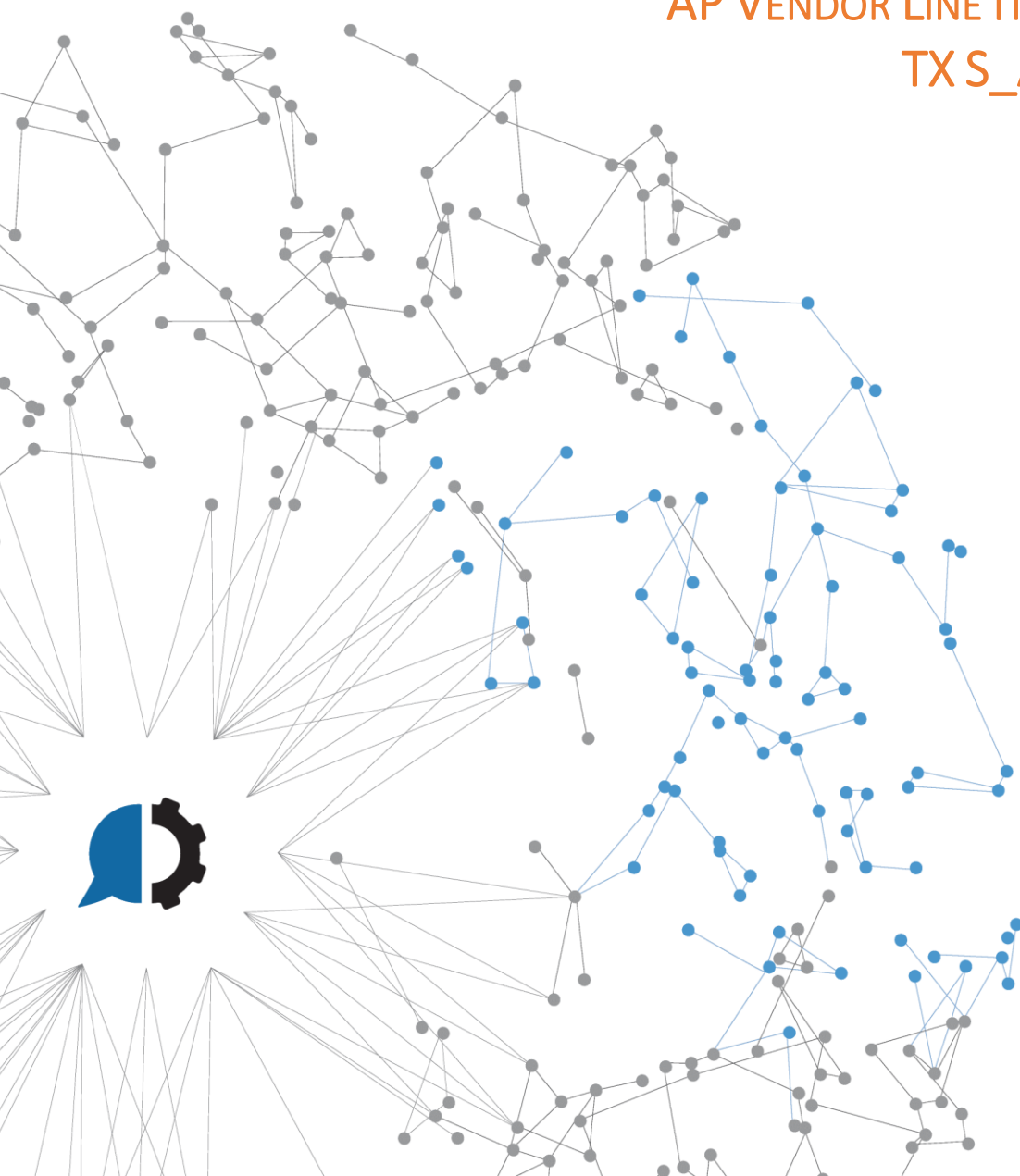




SAP BOT

AP VENDOR LINE ITEMS TX TO EXCEL
TX S_ALR_87012103





Content

| | |
|--|----|
| DETAILS..... | 3 |
| OVERVIEW | 4 |
| PREREQUISITES | 5 |
| HOW TO IMPORT AN AUTOMATE TASK | 7 |
| HOW TO EXECUTE THE SAP BOT - AP VENDOR LINE ITEMS TX S_ALR_87012103 TO EXCEL | 8 |
| APPENDIX A – SAP TRANSACTION AND EXCEL OUTPUT EXAMPLE..... | 10 |
| APPENDIX B - TROUBLESHOOTING | 11 |



DETAILS

DOCUMENT INFORMATION

| AUTHOR | CUSTOMER | CREATION DATE |
|-------------|------------|---------------|
| Helpsystems | <<CLIENT>> | <<DATE>> |

DESCRIPTION

This document provides information to help you understand the implementation, architecture and interfaces for the Automate Enterprise SAP BOT.

DELIVERY LIST

| | |
|-------------|--|
| <<CLIENT>> | <<CONTACT1>> <<CONTACT2>> |
| HELPSYSTEMS | José Garay Dario Soria Sebastian Alvarez |

FILE VERSIONING

| VERSION | DATE | AUTHOR | DESCRIPTION |
|---------|------------|------------|------------------|
| 1.0 | 22/01/2020 | José Garay | Initial document |



OVERVIEW

This how to guide introduces the *SAP Bot - AP Vendor Line Items TX S_ALR_87012103 to Excel*. Instead of spending precious time and resources on repetitive, manual tasks, let Automate go to work and streamline your IT and business processes with robotic process automation. With the help of Automate we can take over manual steps which greatly reduces the repetitive activities and improves the quality and consistency of the work. The top processes being automated are reports generation, file movement, data import and export, and scheduling batch processing.

SAP Bot - AP Vendor Line Items TX S_ALR_87012103 to Excel executes the SAP Transaction TX S_ALR_87012103 to get a list of Vendor Line Items and export the result to an excel file. You will be able to set a Vendor account, Company code and the Posting Date (from and to). SAP transaction Screen:

Vendor selection

Vendor account to

Company code to

Selection using search help

Search help ID

Search string

Line Item Selection

Status

☐ Open Items

Open at Key Date

☐ Cleared Items

Clearing Date to

Open at Key Date

☒ All Items

Posting Date to

Type

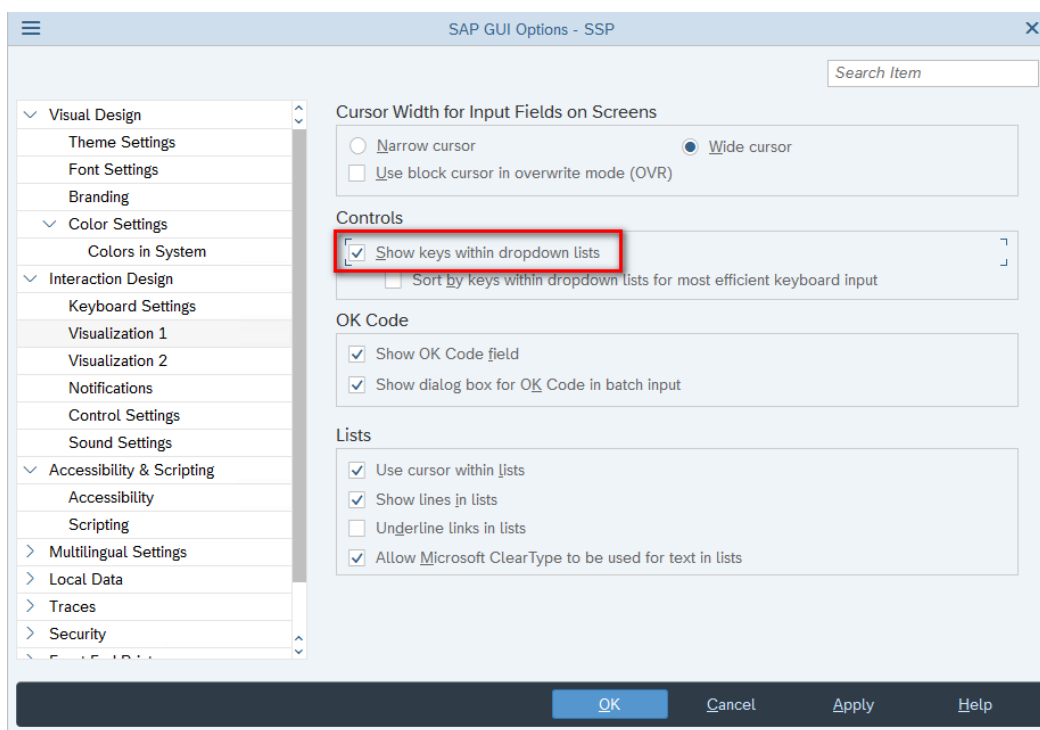
☒ Standard Documents

☐ Parked documents



PREREQUISITES

- **Automate:** The SAP BOT depends on Automate software in order to work. The minimal supported versions are:
 - Automate Ultimate 11.2
 - Automate Plus 11.2
 - Automate Desktop 11.2
- **Automate Markup Language file (.AML):** The primary file type used in Automate which contains the steps of our SAP BOT task
- **SAP Client:** Our minimal requirements are
 - SAP Logon 760
 - Show keys within dropdown lists enabled

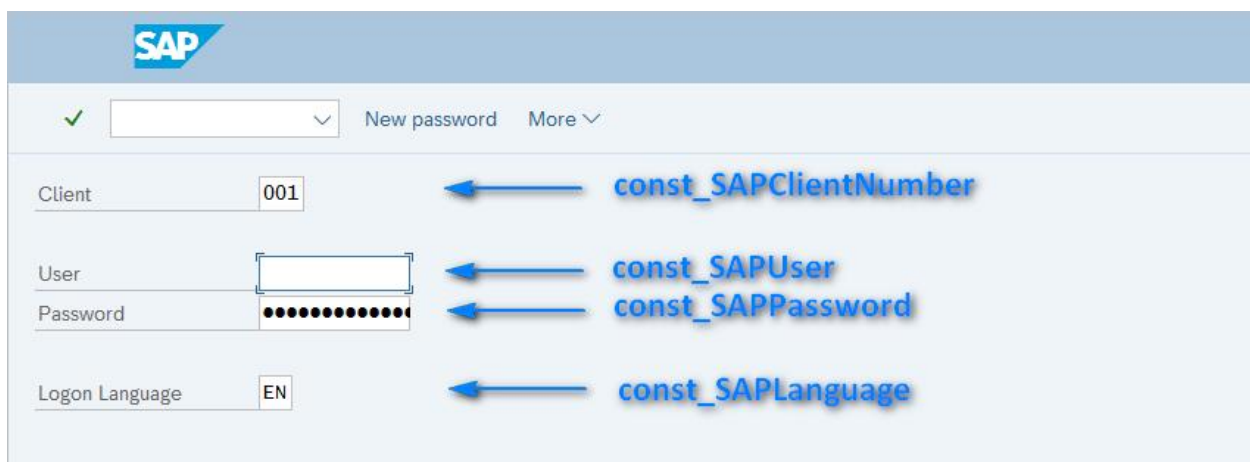
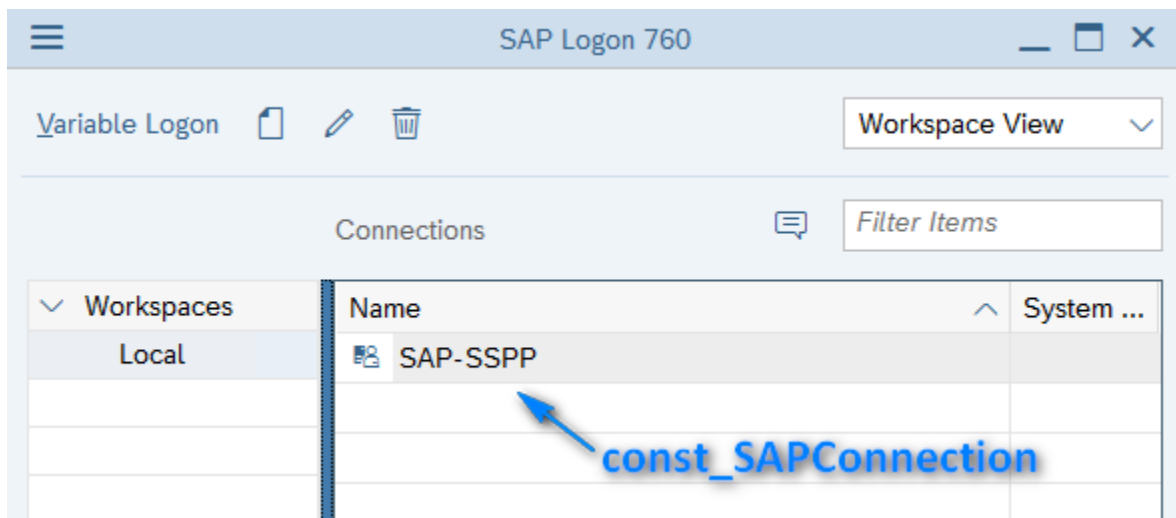


- A user with enough privileges to run the XD01 transaction

To check if you have the required level of authorization to run this and any transaction use SU53. Simply execute TXS_ALR_87012103 and then execute /NSU53 immediately afterwards. A report of all authorizations checked will then be displayed



- Automate constants for connection and SAP Login:
 - `const_SAPClientNumber`: SAP Client Number. By Default: 001
 - `const_SAPConnection`: SAP Login connection name
 - `const_SAPLanguage`: SAP Language. By Default: EN
 - `const_SapLogonPath`: SAP executable path. By Default: C:\Program Files (x86)\SAP\FrontEnd\SapGui\saplogon.exe
 - `const_SAPPassword`: SAP Login Password
 - `const_SAPUser`: SAP Login Username



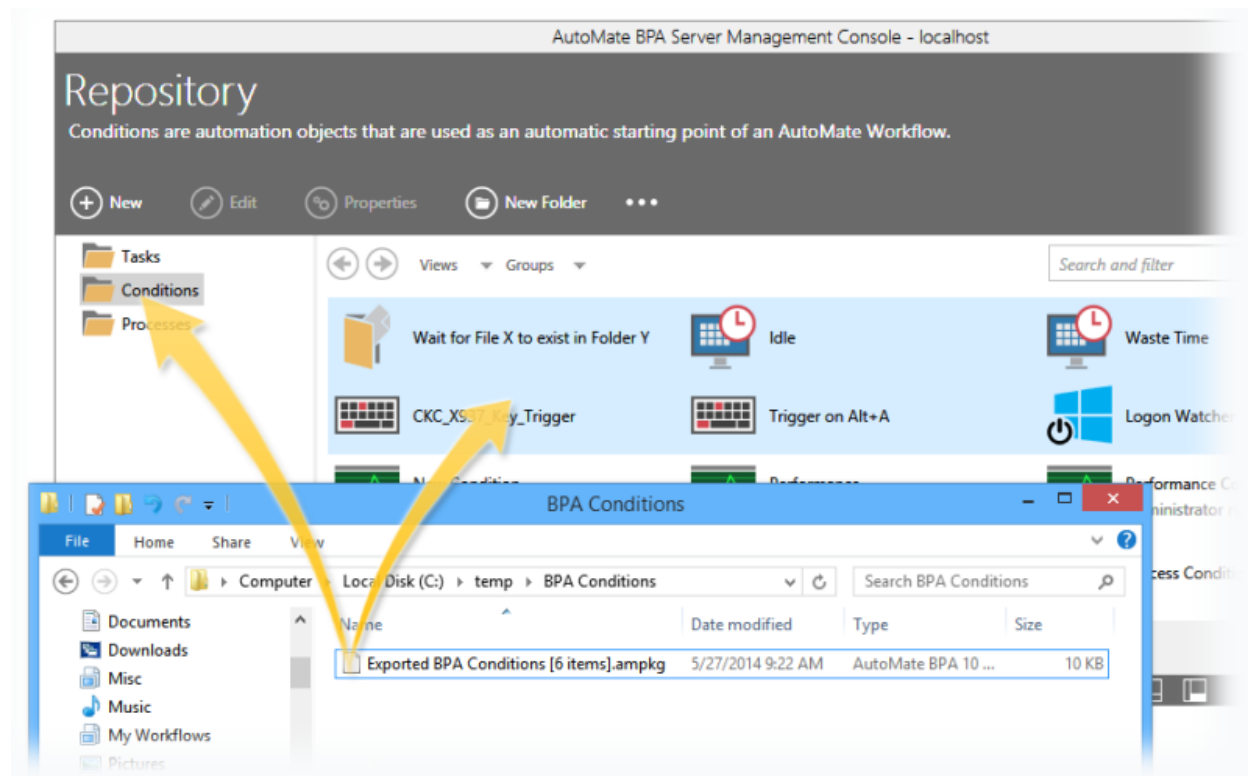


HOW TO IMPORT AN AUTOMATE TASK

Compatible file types can be imported to the repository via drag-and-drop

From the [Server Management Console](#), navigate to the Repository section

Drag the desired file(s) from its original location and drop them into the folder in the [SMC](#). Files can be dropped into the folder icon or the main panel (as shown below). Imported object(s) are automatically placed into their corresponding repository location.



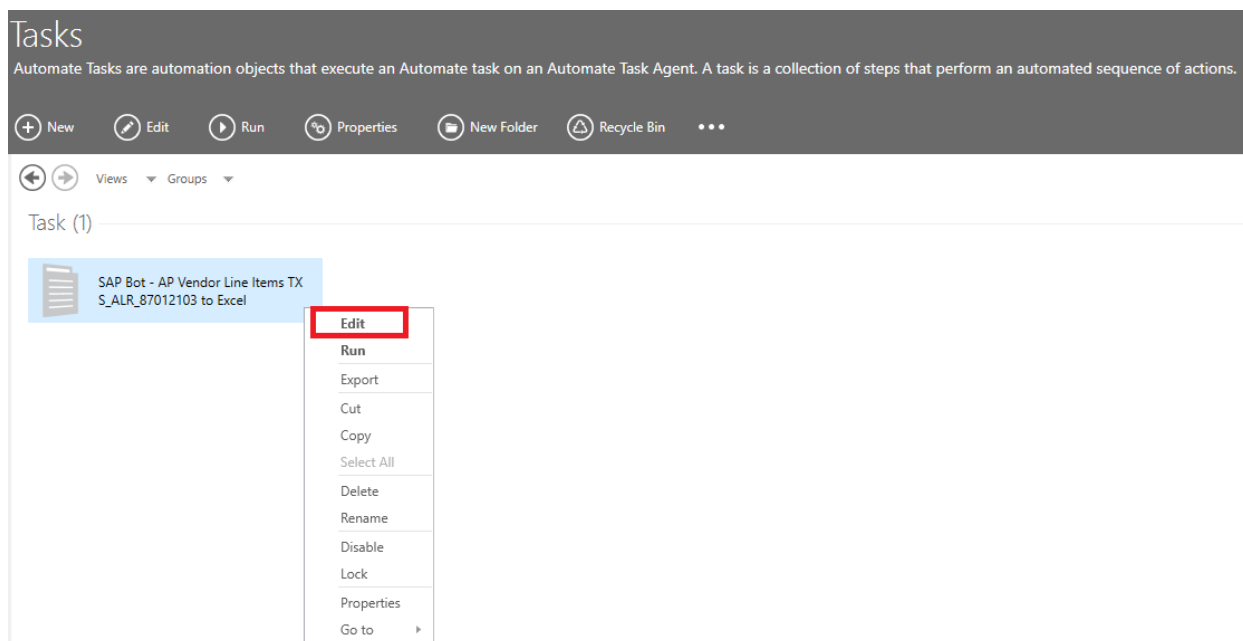


HOW TO EXECUTE THE SAP BOT - AP VENDOR LINE ITEMS TX S_ALR_87012103 TO EXCEL

If this is the first time running this task, we will need to set some parameters

Open the [Server Management Console](#) and locate the imported task

Edit the imported task by right clicking on the task and selecting [edit](#)



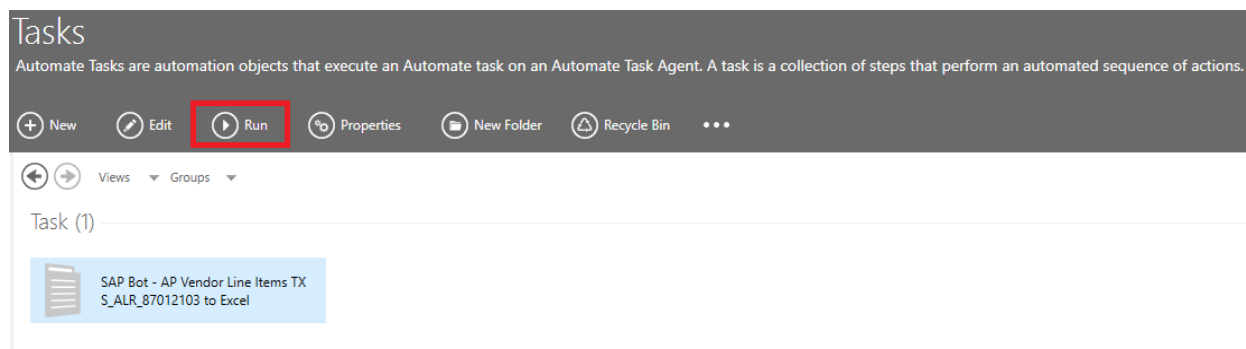
From [step 2](#) edit the next variables according to you desired output:

- [var_VendorAccount](#): Identifier of the Customer account to which the Line Items will be queried.
- [var_CompanyCode](#): Identifier or Code of the Company to which the Line Items will be queried.
- [var_PostingDateFrom](#): Reporting time frame – From posting date.
- [var_PostingDateTo](#): Reporting time frame – To posting date.
- [var_FilePath](#): Path in which the resulting text file will be created.
- [var_FileName](#): Name of the resulting text file with the resulting Line Items list.

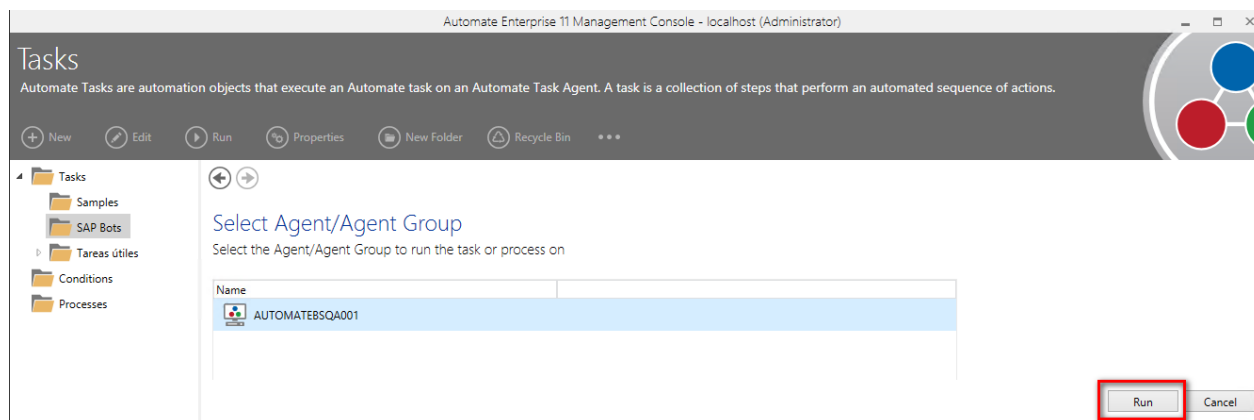
[Save and close](#) the task



Select the task and click on [Run](#)



Select your [Agent](#) and click on [Run](#) again





APPENDIX A – SAP TRANSACTION AND EXCEL OUTPUT EXAMPLE

SAP:

<

SAP

List of Vendor Line Items

✓

Q

≡

≡

≡

Σ

½

☰

☰

☰

☰

☰

☰

☰

☰

☰

☰

☰

☰

☰

☰

☰

☰

☰

☰

☰

☰

☰

☰

☰

☰

☰

☰

☰

☰

☰

☰

☰

☰

☰

☰

☰

☰

☰

☰

☰

☰

☰

☰

☰

☰

☰

☰

☰

☰

☰

☰

☰

☰

☰

☰

☰

☰

☰

☰

☰

☰

☰

☰

☰

☰

☰

☰

☰

☰

☰

☰

☰

☰

☰

☰

☰

☰

☰

☰

☰

☰

☰

☰

☰

☰

☰

☰

☰

☰

☰

☰

☰

☰

☰

☰

☰

☰

☰

☰

☰

☰

☰

☰

☰

☰

☰

☰

☰

☰

☰

☰

☰

☰

☰

☰

☰

☰

☰

☰

☰

☰

☰

☰

☰

☰

☰

☰

☰

☰

☰

☰

☰

☰

☰

☰

☰

☰

☰

☰

☰

☰

☰

☰

☰

☰

☰

☰

☰

☰

☰

☰

☰

☰

☰

☰

☰

☰

☰

☰

☰

☰

☰

☰

☰

☰

☰

☰

☰

☰

☰

☰

☰

☰

☰

☰

☰

☰

☰

☰

☰

☰

☰

☰

☰

☰

☰

☰

☰

☰

☰

☰

☰

☰

☰

☰

☰

☰

☰

☰

☰

☰

☰

☰

☰

☰

☰

☰

☰

☰

☰

☰

☰

☰

☰

☰

☰

☰

☰

☰

☰

☰

☰

☰

☰

☰

☰

☰

☰

☰

☰

☰

☰

☰

☰

☰

☰

☰

☰

☰

☰

☰

☰

☰

☰

☰

☰

☰

☰

☰

☰

☰

☰

☰

☰

☰

☰

☰

☰

☰

☰

☰

☰

☰

☰

☰

☰

☰

☰

☰

☰

☰

☰

☰

☰

☰

☰

☰

☰

☰

☰

☰

☰

☰

☰

☰

☰

☰

☰

☰

☰

☰

☰

☰

☰

☰

☰

☰

☰

☰

☰

☰

☰

☰

☰

☰

☰

☰

☰

☰

☰

☰

☰

☰

☰

☰

☰

☰

☰

☰

☰

☰

☰

☰

☰

☰

☰

☰

☰

☰

☰

☰

☰

☰

☰

☰

☰

☰

☰

☰

☰

☰

☰

☰

☰

☰

☰

☰

☰

☰

☰

☰

☰

☰

☰

☰

☰

☰

☰

☰

☰

☰

☰

☰

☰

☰

☰

☰

☰

☰

☰

☰

☰

☰

☰

☰

☰

☰

☰

☰

☰

☰

☰

☰

☰

☰

☰

☰

☰

☰

☰

☰

☰

☰

☰

☰

☰

☰

☰

☰

☰

☰

☰

☰

☰

☰

☰

☰

☰

☰

☰

☰

☰

☰

☰

☰

☰

☰

☰

☰

☰

☰

☰

☰

☰

☰

☰

☰

☰

☰

☰

☰

☰

☰

☰

☰

☰

☰

☰

☰

☰

☰

☰

☰

☰

☰

☰

☰

☰

☰

☰

☰

☰

☰

☰

☰

☰

☰

☰

☰

☰

☰

☰

☰

☰

☰

☰

☰

☰

☰

☰

☰

☰

☰

☰

☰

☰

☰

☰

☰

☰

☰

☰

☰

☰

☰

☰

☰

☰

☰

☰

☰

☰

☰

☰

☰

☰

☰

☰

☰

☰

☰

☰

☰

☰

☰

☰

☰

☰

☰

☰

☰

☰

☰

☰

☰

☰

☰

☰

☰

☰

☰

☰

☰

☰

☰

☰

☰

☰

☰

☰

☰

☰

☰

☰

☰

☰

☰

☰

☰

☰

☰

☰

☰

☰

☰

☰

☰

☰

☰

☰

☰

☰

☰

☰

☰

☰

☰

☰

☰

☰

☰

☰

☰

☰

☰

☰

☰

☰

☰

☰

☰

☰

☰

☰

☰

☰

☰

☰

☰

☰

☰

☰

☰

☰

☰

☰

☰

☰

☰

☰

☰

☰

☰

☰

☰

☰

☰

☰

☰

☰

☰

☰

☰

☰

☰

☰

☰

☰

☰

☰

☰

☰

☰

☰

☰

☰

☰

☰

☰

☰

☰

☰

☰

☰

☰

☰

☰

☰

☰

☰

☰

☰

☰

☰

☰

☰

☰

☰

☰

☰

☰

☰

☰

☰

☰

☰

☰

☰

☰

☰

☰

☰

☰

☰

☰

☰

☰

☰

☰

☰

☰

☰

☰

☰

☰

☰

☰

☰

☰

☰

☰

☰

☰

☰

☰

☰

☰

☰

☰

☰

☰

☰

☰

☰

☰

☰

☰

☰

☰

☰

☰

☰

☰

☰

☰

☰

☰

☰

☰

☰

☰

☰

☰

☰

☰

☰

☰

☰

☰

☰

☰

☰

☰

☰

☰

☰

☰

☰

☰

☰

☰

☰

☰

☰

☰

☰

☰

☰

☰

☰

☰

☰

☰

☰

☰

☰

☰

☰

☰

☰

☰

☰

☰

☰

☰

☰

☰

☰

☰

☰

☰

☰

☰

☰

☰

☰

☰

☰

☰

☰

☰

☰

☰

☰

☰

☰

☰

☰

☰

☰

☰

☰

☰

☰

☰

☰

☰

☰

☰

☰

☰

☰

☰

☰

☰

☰

☰

☰

☰

☰

☰

☰

☰

☰

☰

☰

☰

☰

☰

☰

☰

☰

☰

☰

☰

☰

☰

☰

☰

☰

☰

☰

☰

☰

☰

☰

☰

☰

☰

☰

☰

☰

☰

☰

☰

☰

☰

☰

☰

☰

☰

☰

☰

☰

☰

☰

☰

☰

☰

☰

☰

☰

☰

☰

☰

☰

☰

☰

☰

☰

☰

☰

☰

☰

☰

☰

☰

☰

☰

☰

☰

☰

☰

☰

☰

☰

☰

☰

☰

☰

☰

☰

☰

☰

☰

☰

☰

☰

☰

☰

☰

☰

☰

☰

☰

☰

☰

☰

☰

☰

☰

☰

☰

☰

☰

☰

☰

☰

☰

☰

☰

☰

☰

☰

☰

☰

☰

☰

☰

☰

☰

☰

☰

☰

☰

☰

☰

☰

☰

☰

☰

☰

☰

☰

☰

☰

☰

☰

☰

☰

☰

☰

☰

☰

☰

☰

☰

☰

☰

☰

☰

☰

☰

☰

☰

☰

☰

☰

☰

☰

☰

☰

☰

☰

☰

☰

☰

☰

☰

☰

☰

☰

☰

☰

☰

☰

☰

☰

☰

☰

☰

☰

☰

☰

☰

☰

☰

☰

☰

☰

☰

☰

☰

☰

☰

☰

☰

☰

☰

☰

☰

☰

☰

☰

☰

☰

☰

☰

☰

☰

☰

☰

☰

☰

☰

☰

☰

☰

☰

☰

☰

☰

☰

☰

☰

☰

☰

☰

☰

☰

☰

☰

☰

☰

☰

☰

☰

☰

☰

☰

☰

☰

☰

☰

☰

☰

☰

☰

☰

☰

☰

☰

☰

☰

☰

☰

☰

☰

☰

☰

☰

☰

☰

☰

☰

☰

☰

☰

☰

☰

☰

☰

☰

☰

☰

☰

☰

☰

☰

☰

☰

☰

☰

☰

☰

☰

☰

☰

☰

☰

☰

☰

☰

☰

☰

☰

☰

☰

☰

☰

☰

☰

☰

☰

☰

☰

☰

☰

☰

☰

☰

☰

☰

☰

☰

☰

☰

☰

☰



APPENDIX B - TROUBLESHOOTING

- Logs: Each iteration of our BOT creates a Log file for troubleshooting. You can locate the log file under C:\AutoMate\Tasks\<<TASK NAME>>. By Default, the task name is *SAP Bot - AP Vendor Line Items TX S_ALR_87012103 to Excel*.



About HelpSystems

Organizations around the world rely on HelpSystems to make IT lives easier and keep business running smoothly. Our software and services monitor and automate processes, encrypt and secure data, and provide easy access to the information people